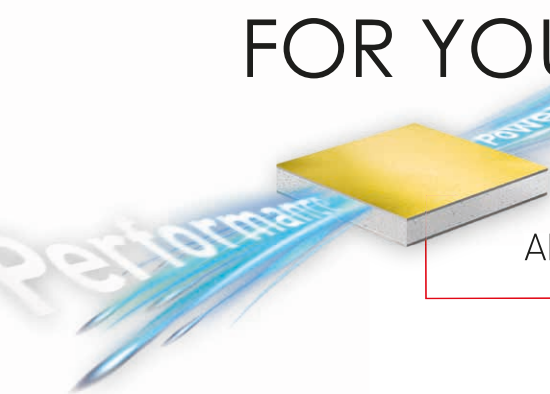




Stock items · Immediately available · Top conditions · **Stock items** · Immediately available · Top conditions

EXPRESS-SERVICE FOR YOUR FAÇADE PROJECT



ALPOLIC™ composite panels **in stock**





Minimum order quantity:

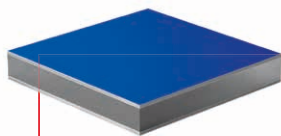
1 pallet of 25 panels
[approx. 154 m² for
ALPOLIC™/fr, 150 m² for
A2 and 114 m² for NC/A1].

Express-Service:

COMPOSITE PANELS IN SELECTED FORMATS
AVAILABLE FOR IMMEDIATE DELIVERY

ALPOLIC™ is now offering a special service: Our high-quality composite panels are now available immediately from stock in selected formats and colours. This means that you can access our products quickly and flexibly when you need them - without long delivery times or the need to build up your own stocks. Benefit from maximum flexibility and react immediately to short-term projects or unexpected requirements. With ALPOLIC™ you save time, space and ensure constant availability of first-class materials.

ALPOLIC™/fr



Panel format:
1,535 x 4,010 mm
(1,485 x 4,350 mm
for Reflective Natural)
Thickness: 4 mm



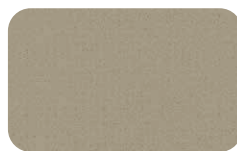
Traffic White
MA9101-G30 (+/- RAL 9016)



Pure White
MA9100-G30 (+/- RAL 9010)



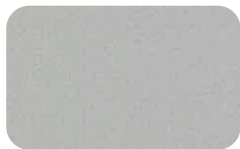
Anthracite Gray
MA7105-G30 (+/- RAL 7016)



Bronze Metallic
MD9504-G30



Smoke Silver
MD9501-G30 (+/- RAL 9007)



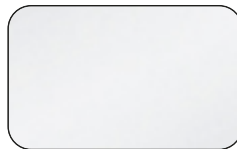
Anodic Silver
MD9500-G30 (+/- RAL 9006)



Natural Brushed
ML2314-G60



Anodized Look C32
ME0C32-G15

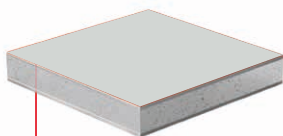


Reflective Natural
DE-AR0101

**Request
your
personalised
offer!**



ALPOLIC™ A2



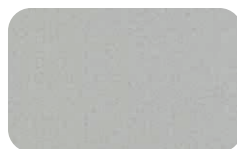
Panel format:
1,500 x 4,010 mm
Thickness: 4 mm



Anthracite Gray
MA7105-G30 (+/- RAL 7016)



Smoke Silver
MD9501-G30 (+/- RAL 9007)



Anodic Silver
MD9500-G30 (+/- RAL 9006)



Pure White
MA9100-G30 (+/- RAL 9010)

ALPOLIC™ – the world's first address for aluminium composite panels

Our materials are almost
100 % recyclable. Even
waste from ALPOLIC™
plants is collected and
recycled.



Certifications



CSTB
le futur en construction



BBA
BETONBAU
VERBAND



TÜV
TECHNICAL SERVICES



ISO 14005 UND
EN 15804



Trademark of AGC Chemicals,
Asahi Glass Co., Ltd.



AVAILABLE IN THE UK THROUGH PCS LCD

UK Registered Office: **50 Cowick Street, Exeter EX4 1AP** | +44 (0)3301 75 75 07
info@procompositesolutions.com | **www.procompositesolutions.com**

